



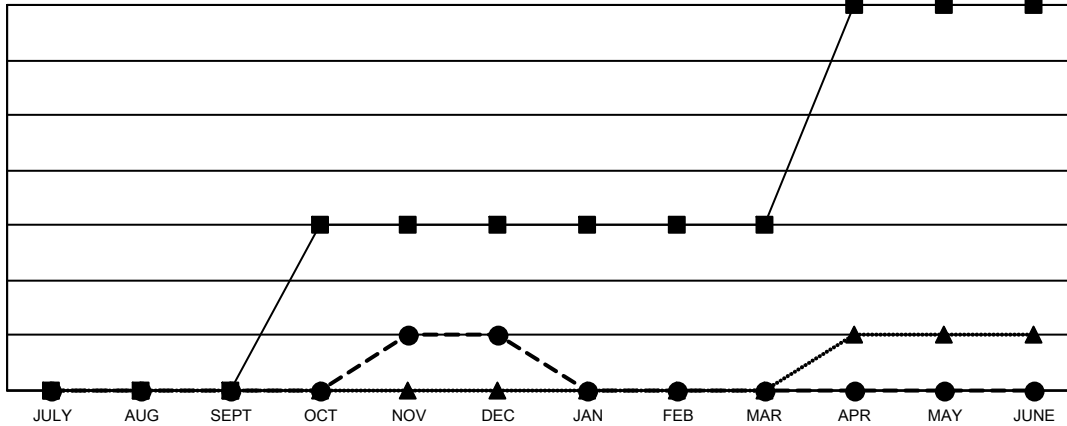
GMT: OPEN

GMT CA 7

Clubs			
RESULTS FOR 2023-2024			
QUARTER	NEW CLUB GOAL	NEW CLUBS	DROPPED CLUBS
JULY/AUG/SEPT	0	0	3
OCT/NOV/DEC	3	1	2
JAN/FEB/MAR	0	0	0
APR/MAY/JUNE	4	0	0

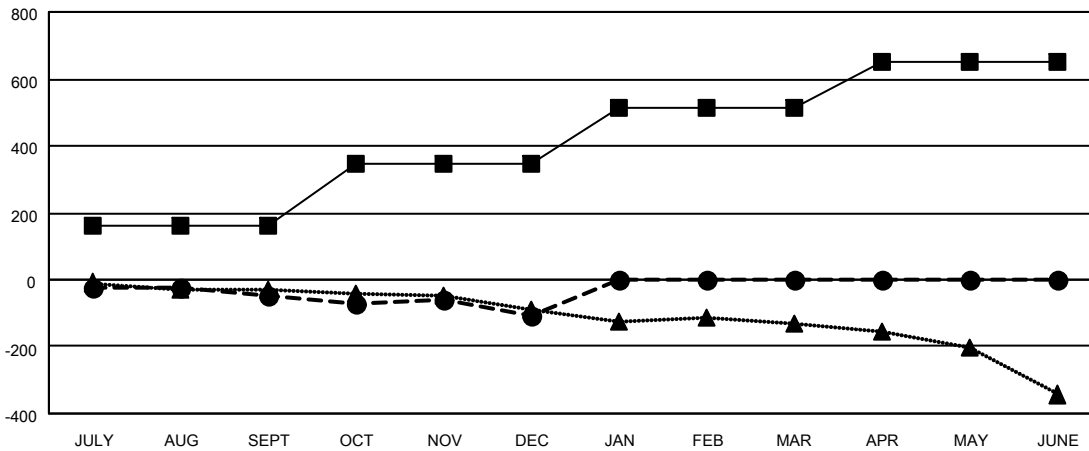
Members			
RESULTS FOR 2023-2024			
QUARTER	MEMBER GROWTH NET GOAL	MEMBER GROWTH ACTUAL	DROPPED MEMBERS ACTUAL (including transfers)
JULY/AUG/SEPT	162	183	200
OCT/NOV/DEC	182	185	227
JAN/FEB/MAR	168	0	0
APR/MAY/JUNE	139	0	0

GOALS AND ACTUAL NEW CLUBS CUMULATIVE



- - CURRENT YEAR GOALS FOR NEW CLUBS
- - CURRENT YEAR ACTUAL NEW CLUBS
- ▲ - LAST YEAR ACTUAL NEW CLUBS

GOALS AND ACTUAL MEMBERS CUMULATIVE



- - MEMBER GROWTH NET GOAL
- - MEMBER GROWTH ACTUAL
- ▲ - LAST YEAR MEMBERSHIP ACTUAL

<p>DROPPED CLUBS: 5</p>	<p>143 CLUBS OF 300 ADDED 1 OR MORE NEW MEMBERS</p>	<p><u>GENDER DISTRIBUTION</u></p> <p>MALE 5,209 (67.01%)</p> <p>FEMALE 2,565 (32.99%)</p>	
		<p><u>DROPPED MEMBERS</u></p> <p>DECEASED 55</p> <p>CLUB CANCELLED 0</p> <p>OTHER 372</p> <p>TOTAL 427</p>	<p><a href="#">CLICK HERE FOR CUMULATIVE MEMBERSHIP DATA</a></p> <p>TOTAL FAMILY UNIT MEMBERS 709</p> <p>FAMILY MEMBERS PAYING HALF DUES 357</p>